



# INDOFINE Chemical Company, Inc.

121 Stryker Lane, Bldg. 30, Suite 1 • Hillsborough, NJ 08844 • U.S.A.

Phone: (908) 359-6778 • FAX: (908) 359-1179

website: [www.indofinechemical.com](http://www.indofinechemical.com)

e-mail: [chemical@indofinechemical.com](mailto:chemical@indofinechemical.com)

## CERTIFICATE OF ANALYSIS

Catalog Number: 026021

Product Name: **4-DIMETHYLAMINOCINNAMALDEHYDE**

CAS Number: [6203-18-5]

Lot Number: 2001382

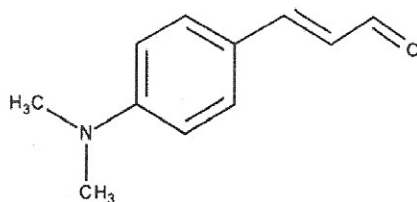
Chemical Formula: C<sub>11</sub>H<sub>13</sub>NO

Molecular Weight: 175.23

Appearance: Dark orange powder

Storage: Store in a cool, dry and dark place

Purity(HPLC): 99.14%



Prepared by:  
*Ramesh Mandadi*  
Ramesh Mandadi  
Director of Operations

Reviewed and Approved by:  
*Sujata Moton*  
Sujata Moton  
VP



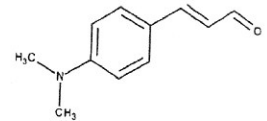
# INDOFINE Chemical Company, Inc.

121 Stryker Lane, Bldg. 30, Suite 1 • Hillsborough, NJ 08844 • U.S.A.

Phone: (908) 359-6778 • FAX: (908) 359-1179

website: [www.indofinechemical.com](http://www.indofinechemical.com)

e-mail: [chemical@indofinechemical.com](mailto:chemical@indofinechemical.com)



## HPLC ANALYSIS

CRL-M-12.lcd

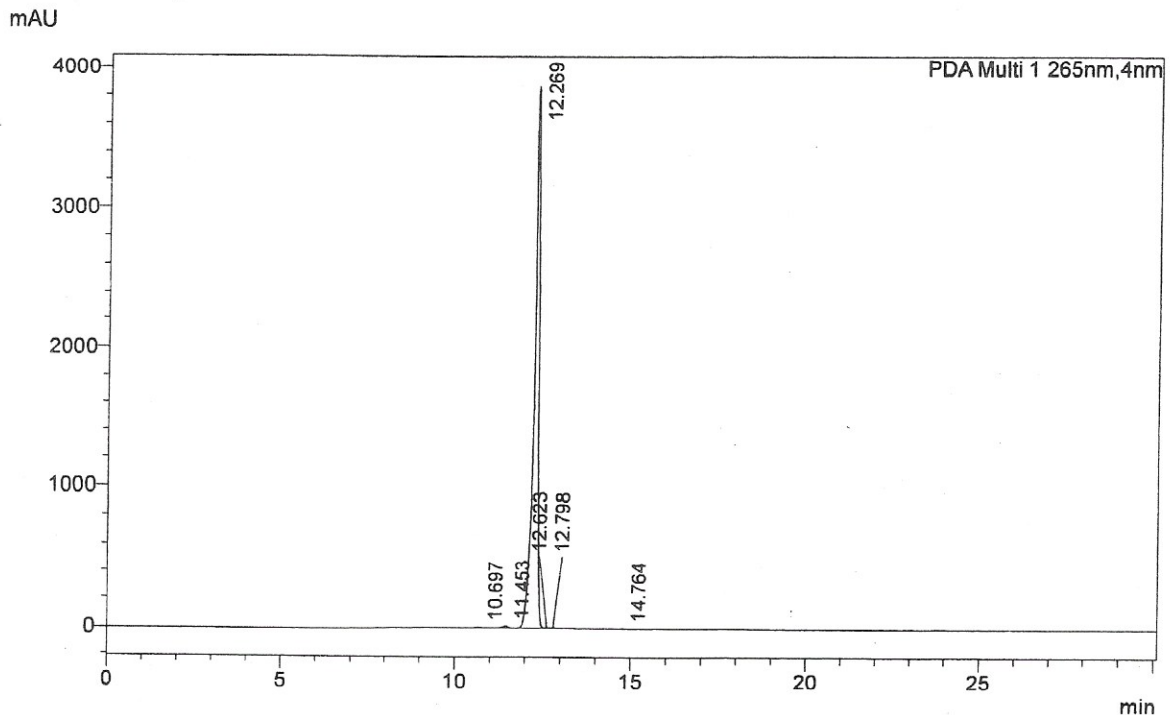
Sample Name : CRL-M-12  
A.R.Number : 002833  
Data Filename : CRL-M-12.lcd  
Method Filename : Chemridge.lcm  
Batch Filename : 12-Jan-2020.lcb  
Vial # : 2-4  
Injection Volume : 20 uL

Catalog No.: 026021  
Product Name: 4-Dimethylaminocinnamaldehyde  
Lot No.: 2001382  
Instrument ID-LC-07

Acquired by : N.Rajendar  
Processed by : S.Purushotham

Column ID:HPLC-147  
Column:Inertsil ODS 3V (250X4.6mm, 5µ)  
Mobile phase :A: ACN  
B: 0.05% TFA in Water  
Flow rate:1.0 mL/min  
Gradient programm:0.01/10,12/90,20/90,23/10,30/10 (% of A Con)  
Diluent:MeOH  
Sample preparation: 0.5 mg/ml in diluent

### <Chromatogram>



### <Peak Table>

PDA Ch1 265nm CRL-M-12.lcd

Peak#	Ret. Time	Relative Retention Time	Area	Area%
1	10.697	0.872	39797	0.113
2	11.453	0.933	143267	0.406
3	12.269	1.000	35008881	99.149
4	12.623	1.029	48911	0.139
5	12.798	1.043	40123	0.114
6	14.764	1.203	28287	0.080
Total			35309265	100.000